

**AQA, OCR, Edexcel**

**GCSE**

# GCSE Maths

## Sketching Quadratic Graphs

### Answers

Name:

**M**

**M**

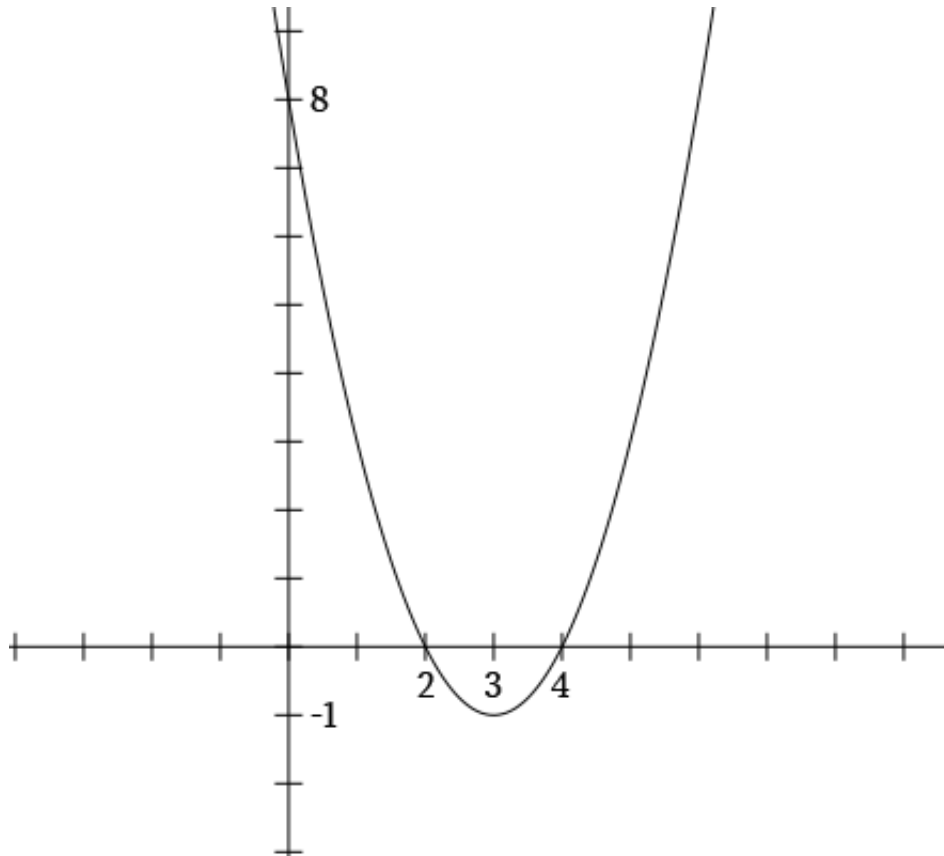
**E**

Mathsmadeeasy.co.uk

Total Marks: /12

## Sketching Quadratics

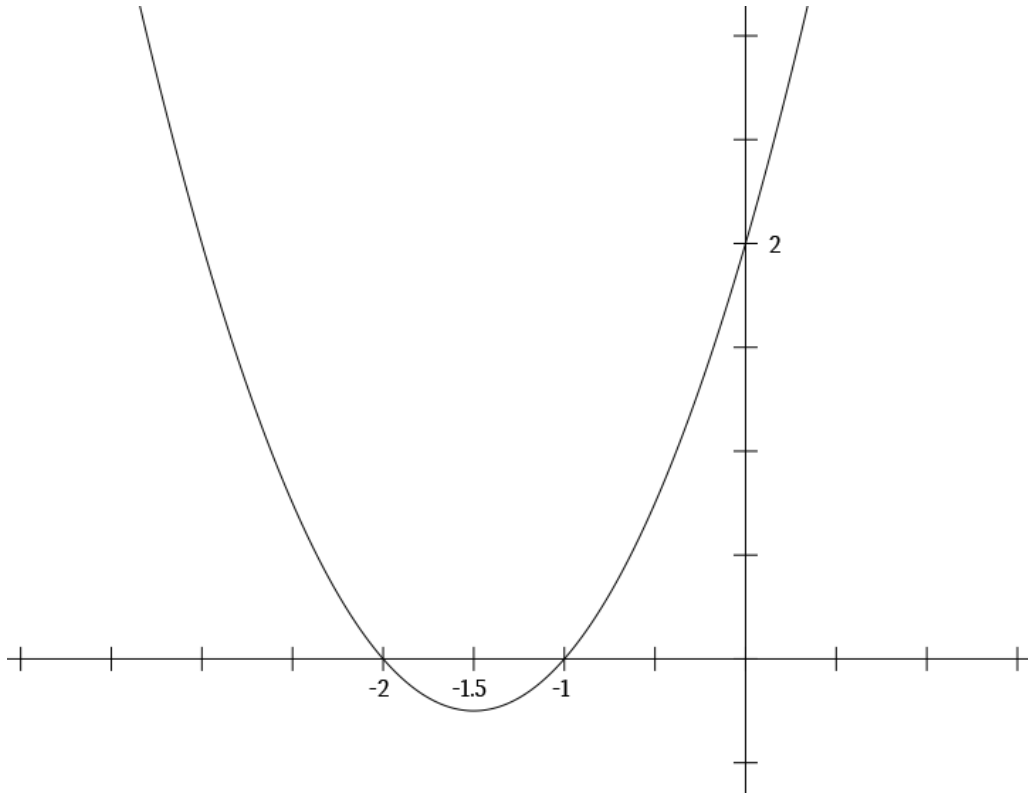
1. Sketch the graph of  $y = x^2 - 6x + 8$ , labelling the turning point, the  $x$  intercepts and the  $y$  intercept with their coordinates.



(3 Marks)

Visit <http://www.mathsmadeeasy.co.uk/> for more fantastic resources.

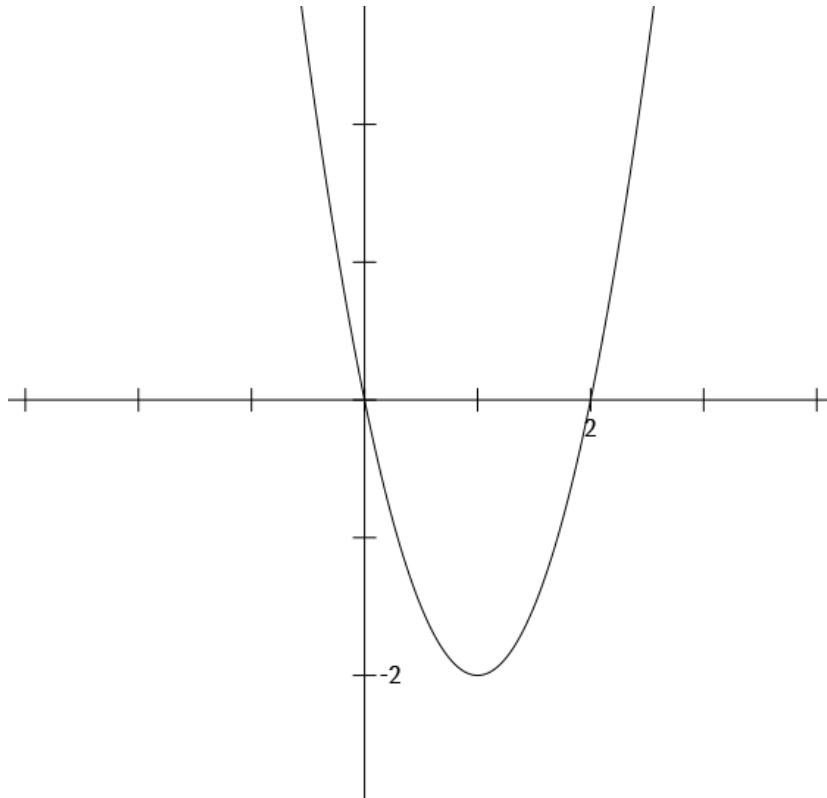
2. Sketch the graph of  $y = x^2 - 3x + 2$ , labelling the turning point, the  $x$  intercepts and the  $y$  intercept with their coordinates.



(3 Marks)

Visit <http://www.mathsmadeeasy.co.uk/> for more fantastic resources.

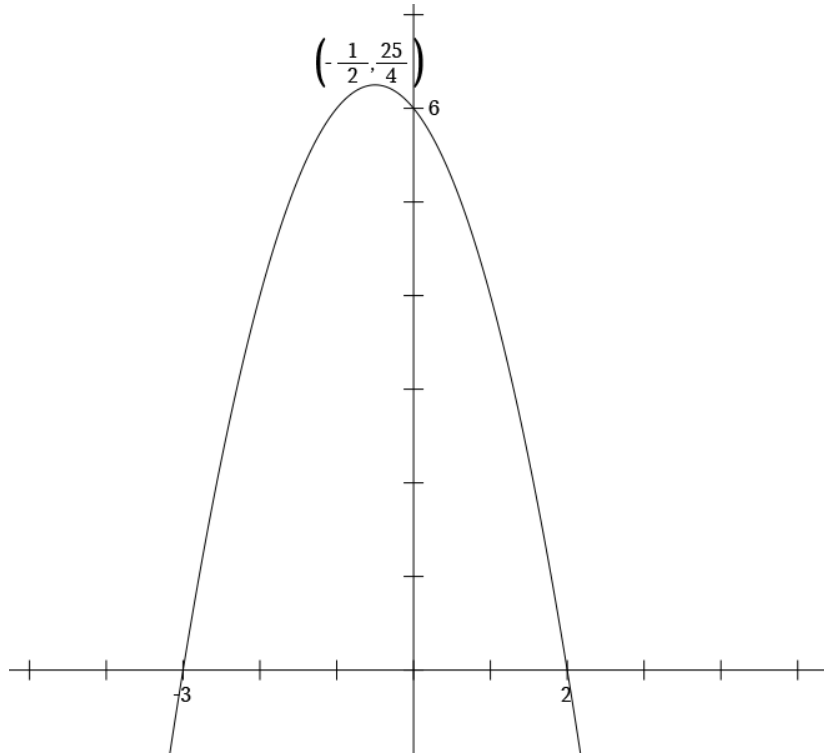
3. Sketch the graph of  $y = 2x^2 - 4x$ , labelling the turning point, the  $x$  intercepts and the  $y$  intercept with their coordinates.



(3 Marks)

Visit <http://www.mathsmadeeasy.co.uk/> for more fantastic resources.

4. Sketch the graph of  $y = -x^2 - x + 6$ , labelling the turning point, the  $x$  intercepts and the  $y$  intercept with their coordinates.



(3 Marks)