

AQA, OCR, Edexcel

GCSE

GCSE Maths

Plotting Harder Graphs Answers

Name:

M

M

E

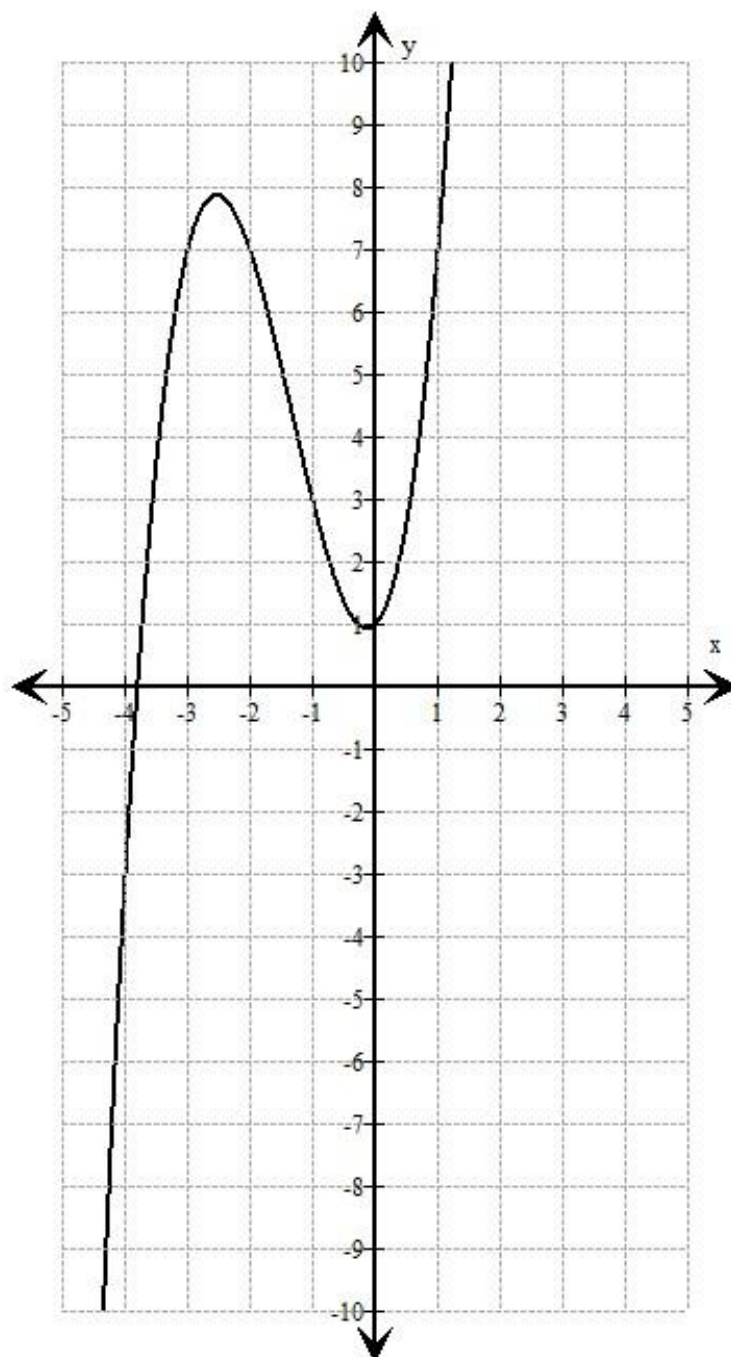
Mathsmadeeasy.co.uk

Total Marks: /12

Harder graphs

1. Draw the Graph of $y = x^3 + 4x^2 + x + 1$ for the values of x between -4 and 2.

x	-4	-3	-2	-1	0	1	2
y	-3	7	7	3	1	7	27

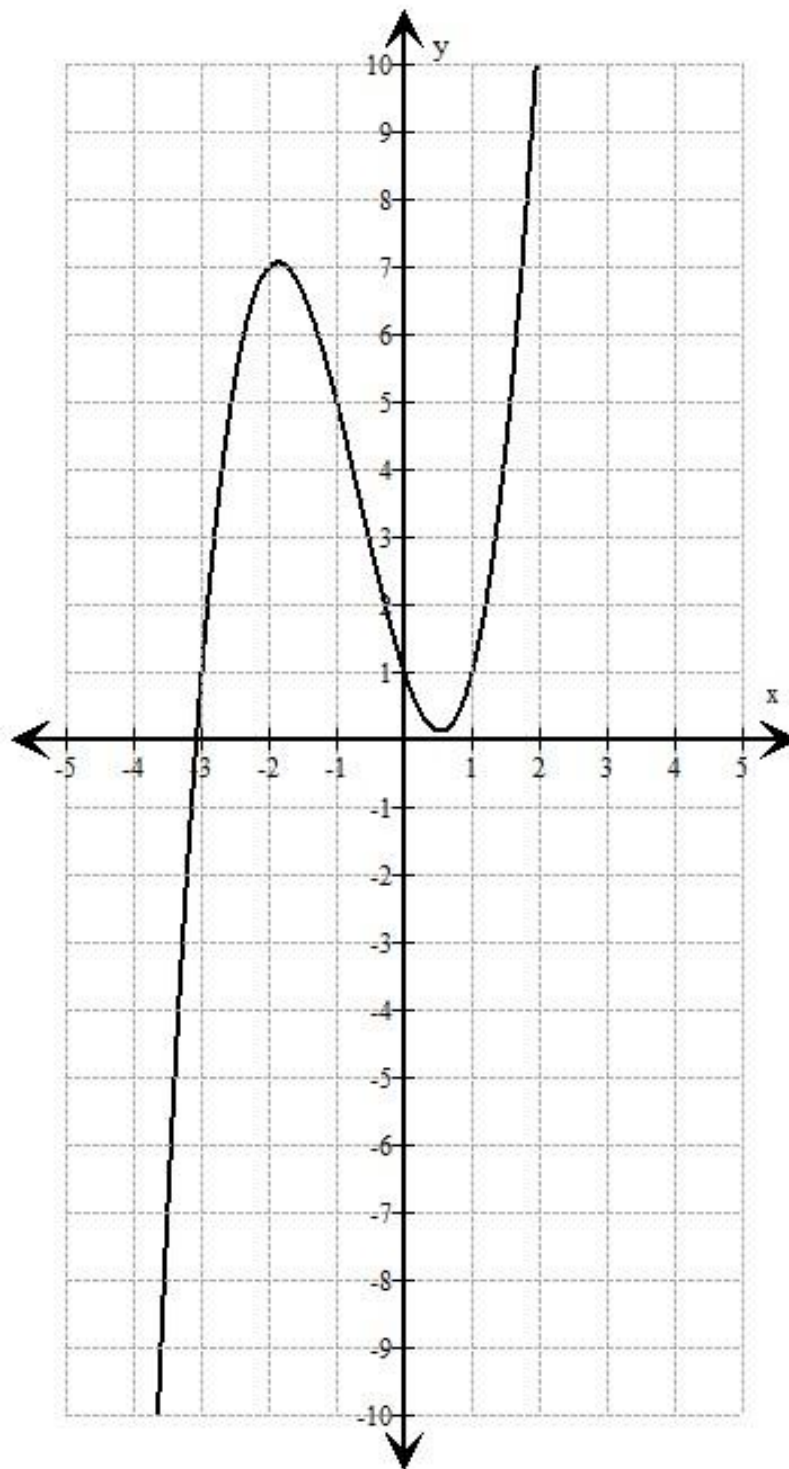


(6 Marks)

Visit <http://www.mathsmadeeasy.co.uk/> for more fantastic resources.

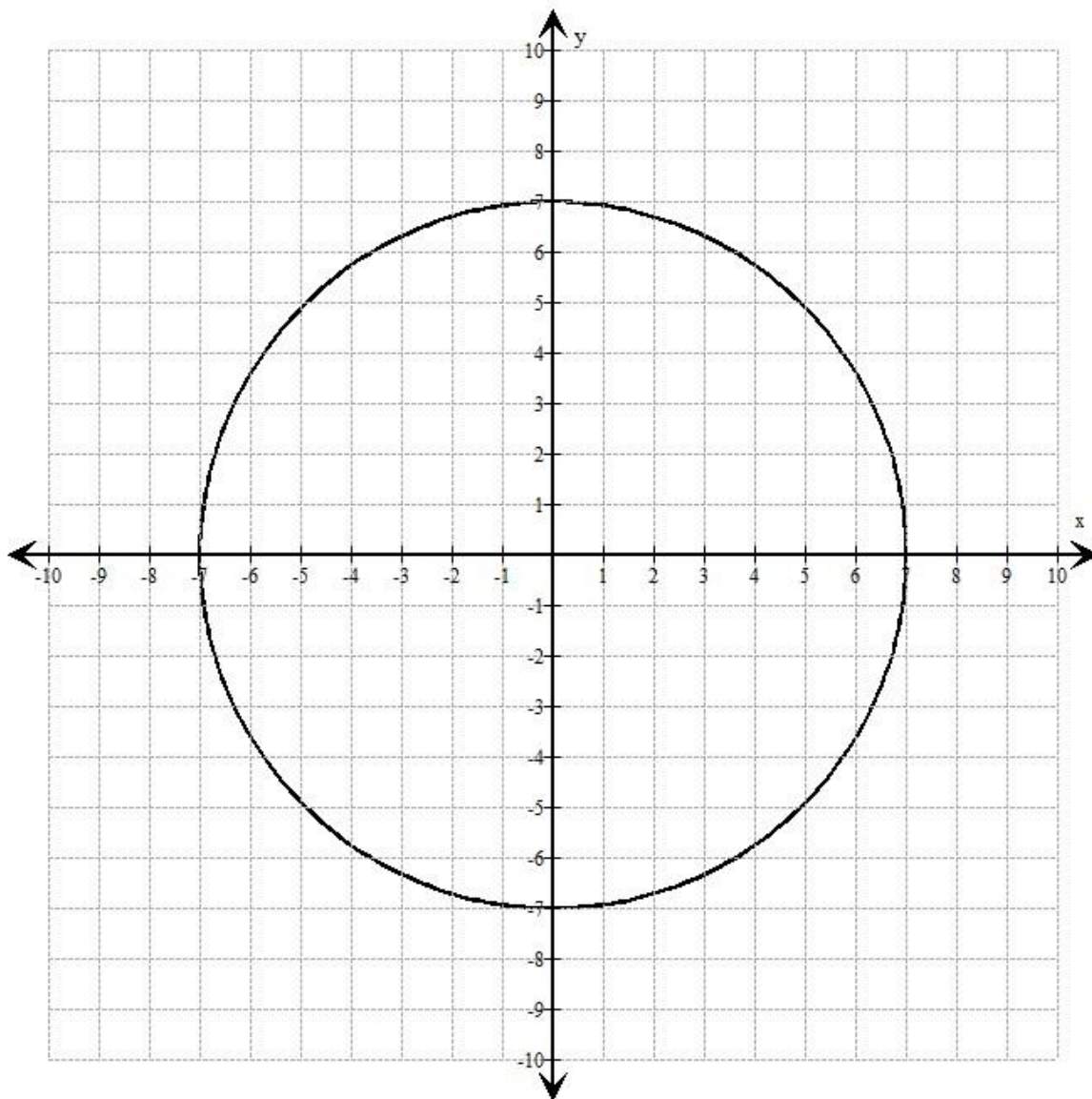
2. Draw the graph of $y = x^3 + 2x^2 - 3x + 1$ for the values of x between -4 and 2.

x	-4	-3	-2	-1	0	1	2
y	-19	1	7	5	1	1	11



(6 Marks)

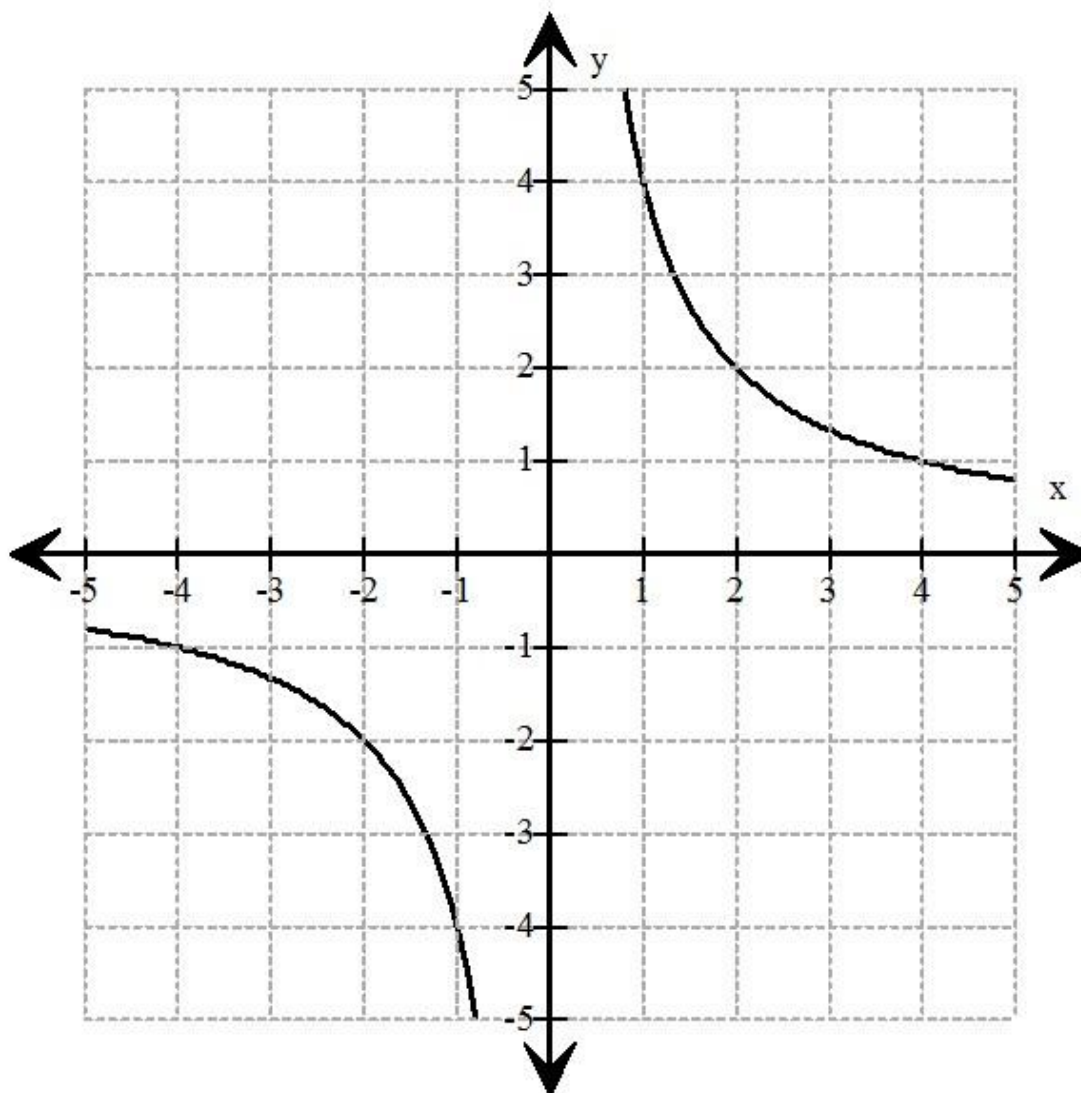
3. Draw the graph of $y^2 + x^2 = 49$ on the grid axis below:



(3 Marks)

4. Draw the graph of $y = \frac{4}{x}$ for the values of x between -5 and 5. (Hard)

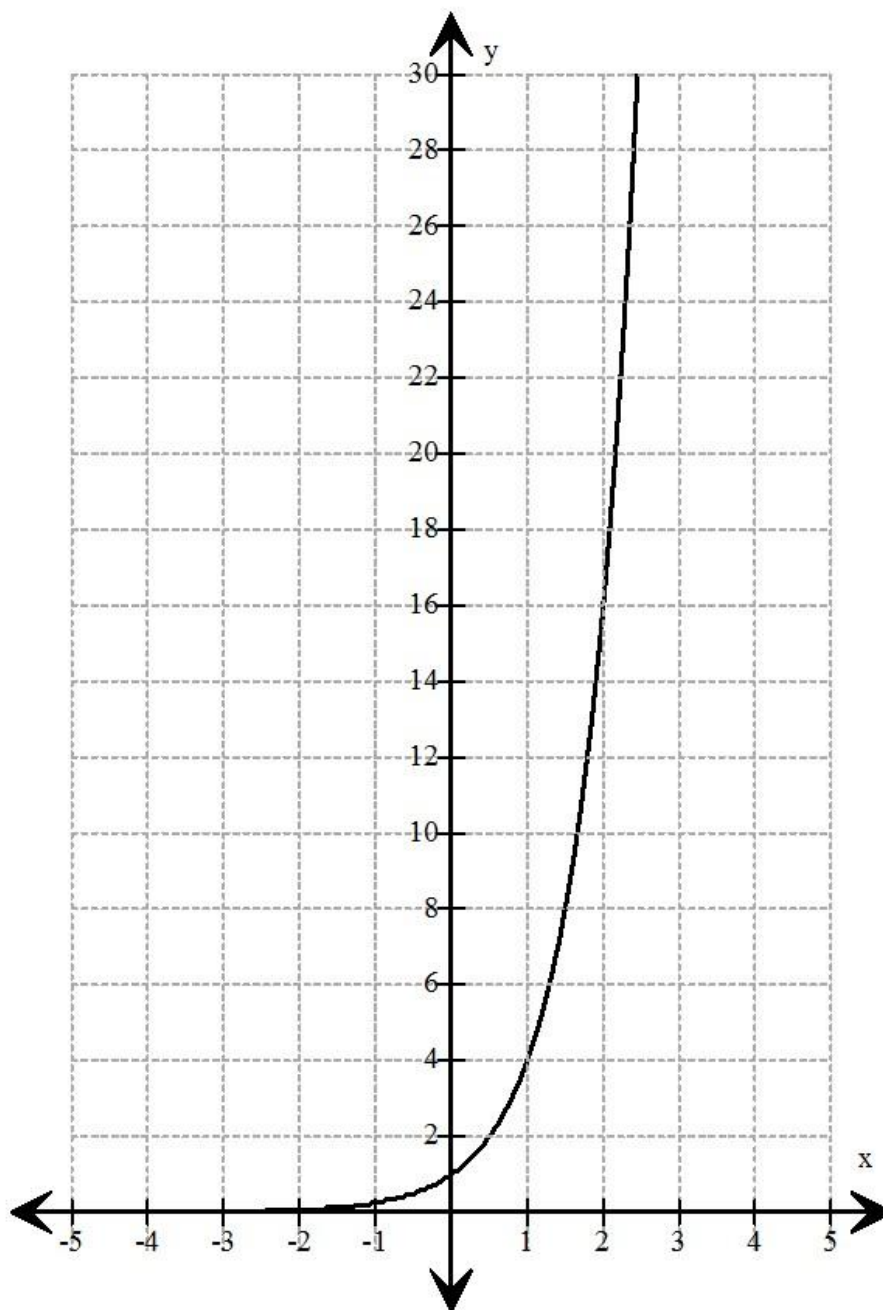
x	-5	-4	-3	-2	-1	0	1	2	3	4	5
y	$-\frac{4}{5}$	-1	$-\frac{4}{3}$	-2	-4		4	2	$\frac{4}{3}$	1	$\frac{4}{5}$



(4 Marks)

5. Draw the graph of $y = 4^x$ for values of x from -2 to 2. (Hard)

x	-2	-1	0	1	2
y	1/8	1/4	1	4	16



(5 Marks)